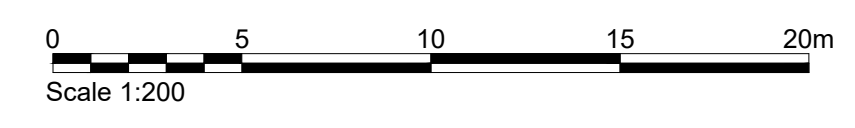
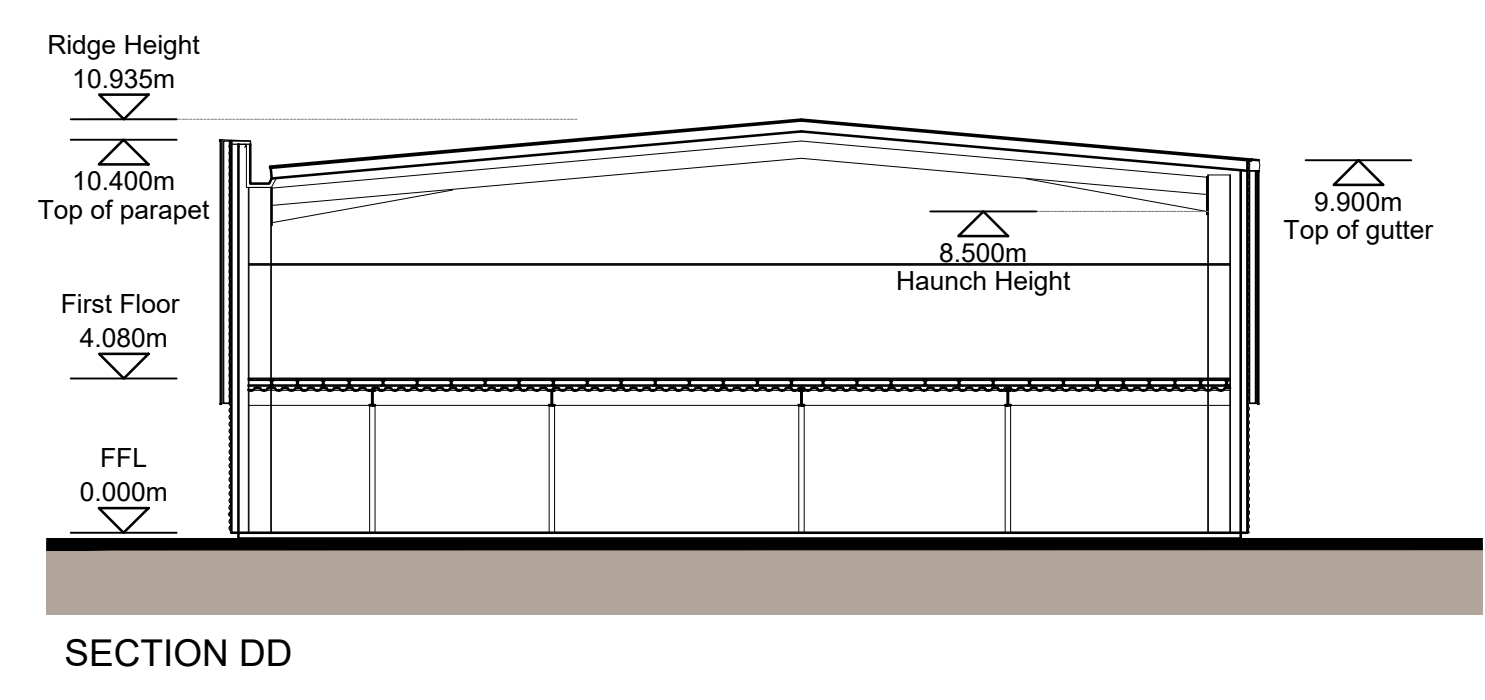
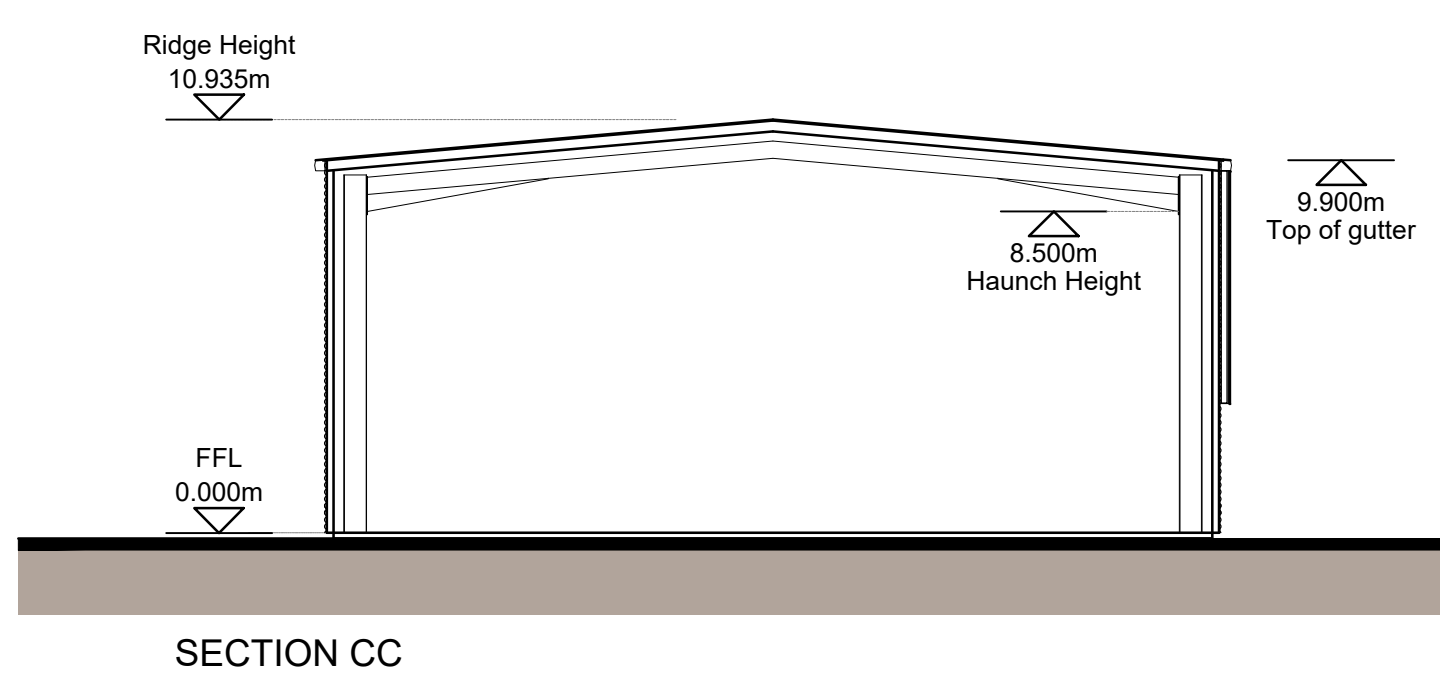
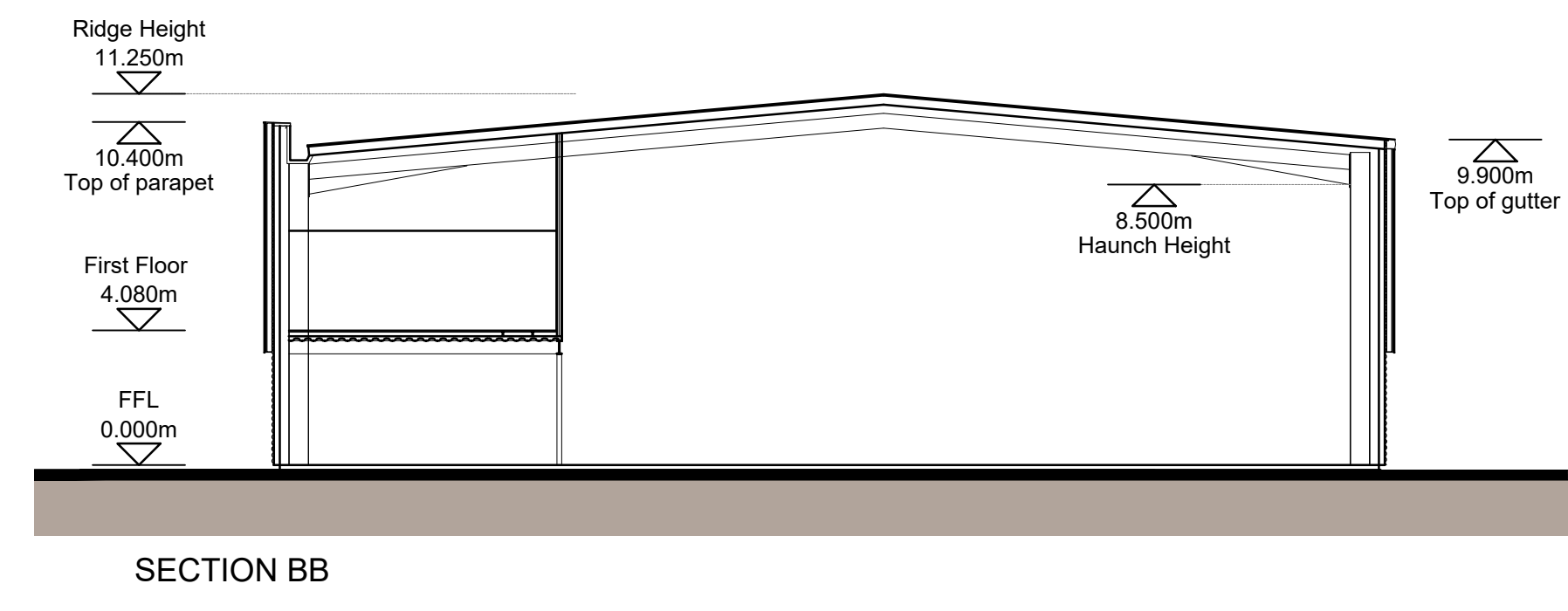
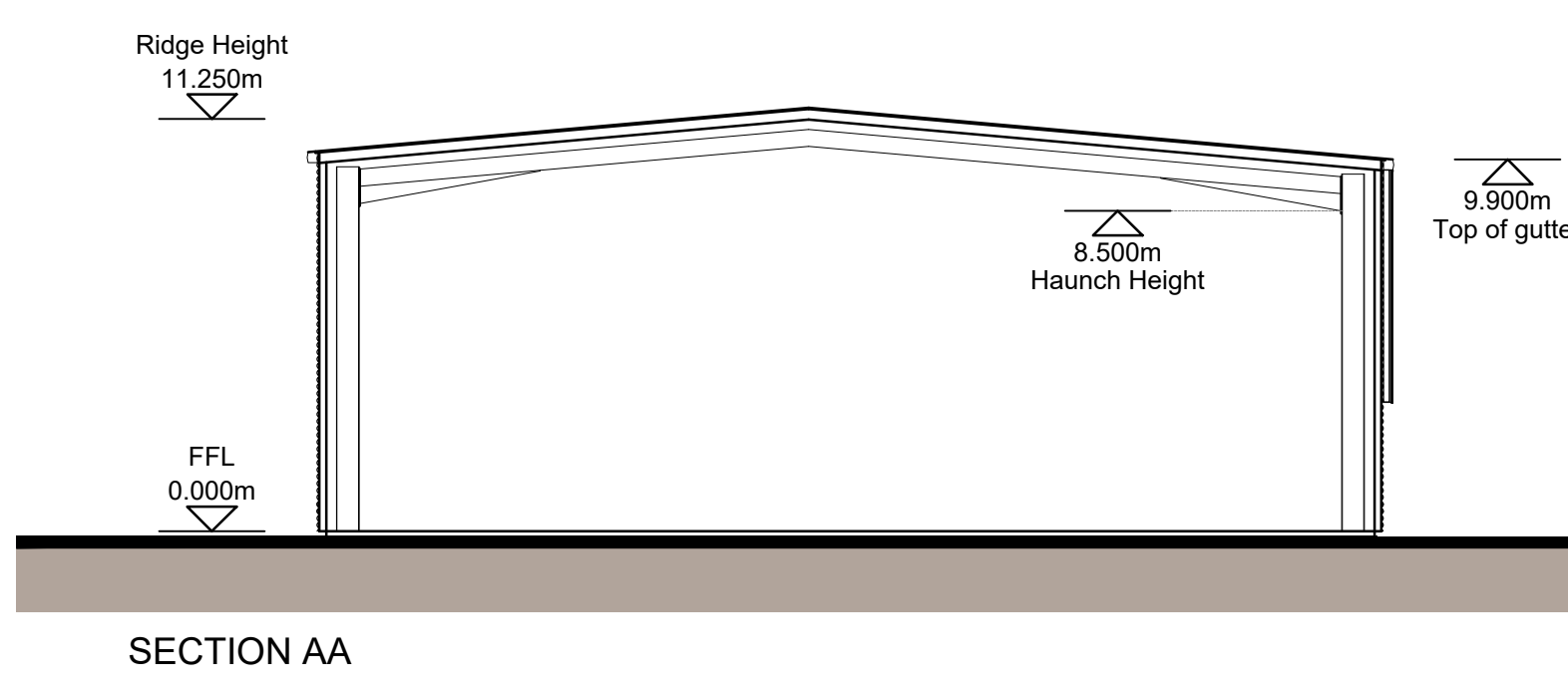


- MATERIALS KEY**
- ① PROFILED ROOF CLADDING (GOOSEWING GREY RAL 7038)
  - ② SIBERIAN LARCH CLADDING
  - ③ HORIZONTAL ARC PROFILE CLADDING (METALLIC SILVER RAL 9006)
  - ④ ALUMINIUM FRAMED WINDOWS AND FULL HEIGHT GLAZING (ANTHRACITE RAL 7016)
  - ⑤ ALUMINIUM FRAMED ENTRANCE DOORS AND FULL HEIGHT GLAZING (ANTHRACITE RAL 7016)
  - ⑥ LOADING BAY DOORS (ANTHRACITE RAL 7016)
  - ⑦ STEEL PERSONNEL DOORS (ANTHRACITE RAL 7016)
  - ⑧ STEEL BOLLARD (GREEN RAL 6018)
  - ⑨ MAIN ENTRANCE BRISE-SOLEIL
  - ⑩ SIGNAGE ZONE, INDICATIVE
  - ⑪ BACKLIT ILLUMINATED ALUMINIUM UNIT NUMERAL (RAL 6016 FACE)
  - ⑫ ALUMINIUM RAINWATER GOODS (ANTHRACITE RAL 7016)



Client: HEZ READING 1 GP LTD (LONDON)

Project: HEADLEY ROAD EAST WOODLEY

Drawing Title: UNITS 1-5 PROPOSED ELEVATIONS

Scale @ A2: 1:200

Checked by: JR

Date: SEPT 21

Job No: 11359

Stage: PL 120

Rev: A

Issue Status: Working London, Information Approval, Tender

Offices: Milton Keynes, Warsaw

PRC Architecture & Planning

This page is intentionally left blank